

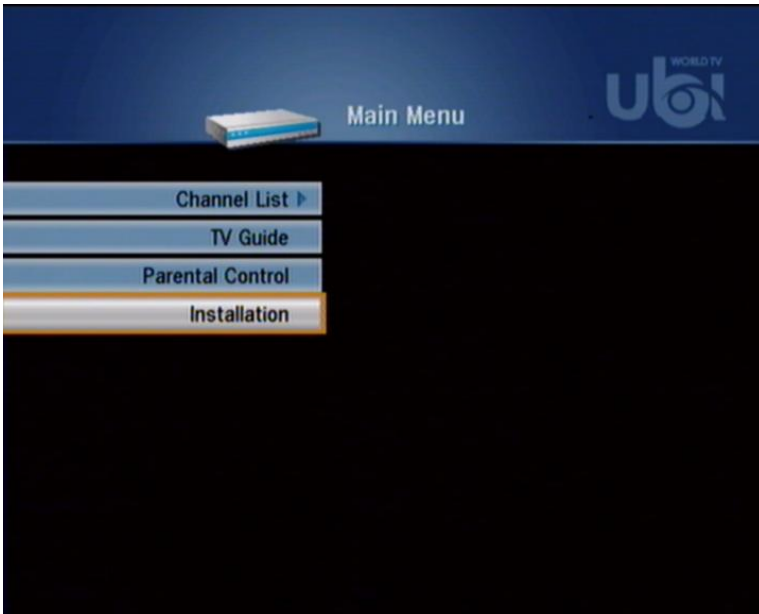
UBI WORLD TV – UBI HUMAX STB – CHANNEL SEARCH

This guide will assist you to setup the UBI Humax STB



STEP 1

START ON ANY CHANNEL

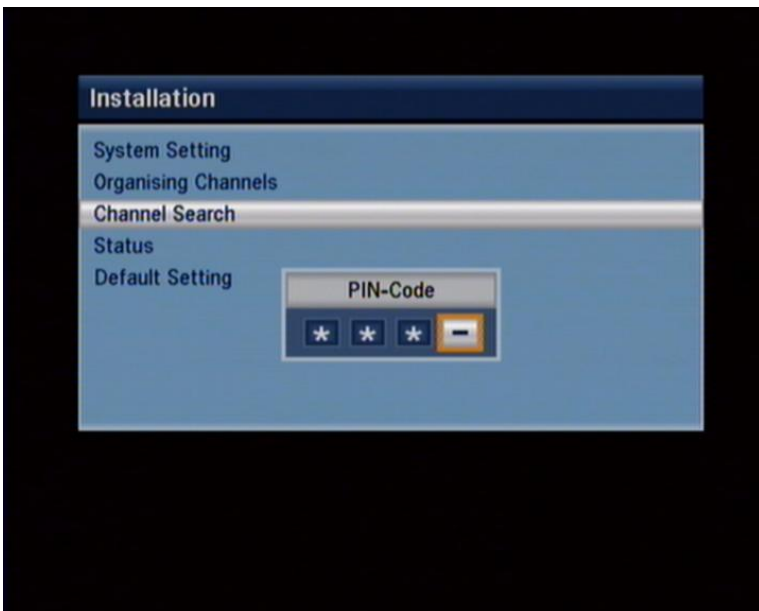


STEP 2

PRESS **MENU**

SCROLL DOWN TO **INSTALLATION**

PRESS **OK**



STEP 3

PRESS **OK** ON **CHANNEL SEARCH**

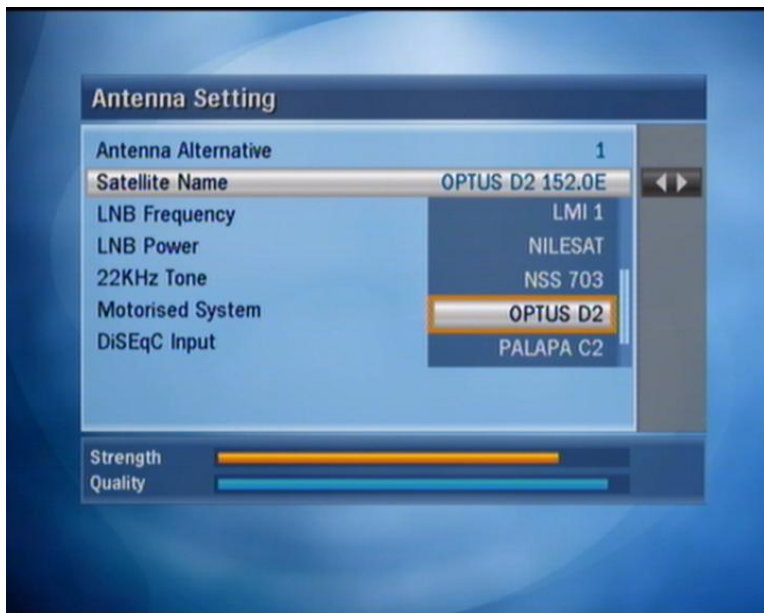
TYPE IN PIN CODE **8272** or **0000**

IF YOU MAKE A MISTAKE PRESS THE LEFT ARROW TO DELETE THE WRONGLY ENTERED NUMBER



STEP 4

PRESS **OK** ON **ANTENNA SETTING**



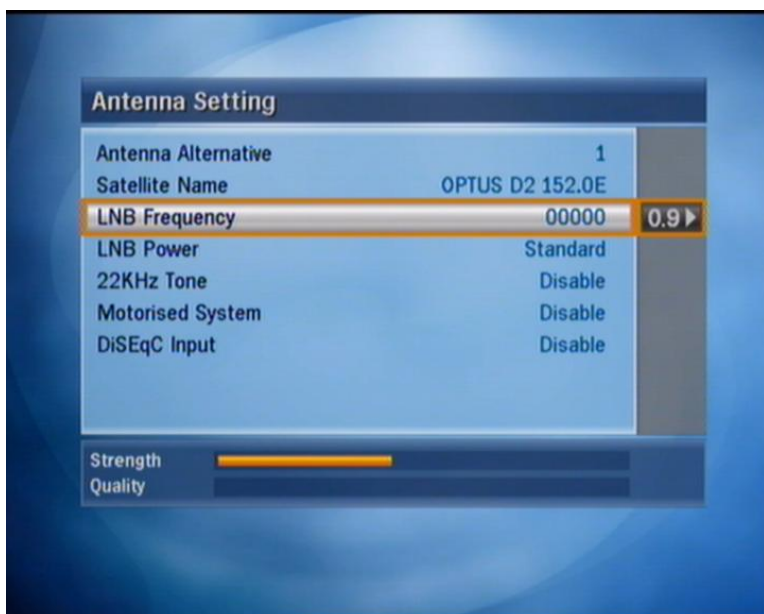
STEP 5

SCROLL DOWN TO **SATELLITE NAME**

PRESS THE **LEFT ARROW** TO OPEN THE SUB MENU

SCROLL DOWN UNTIL **OPTUS D2** IS SELECTED

PRESS **OK**



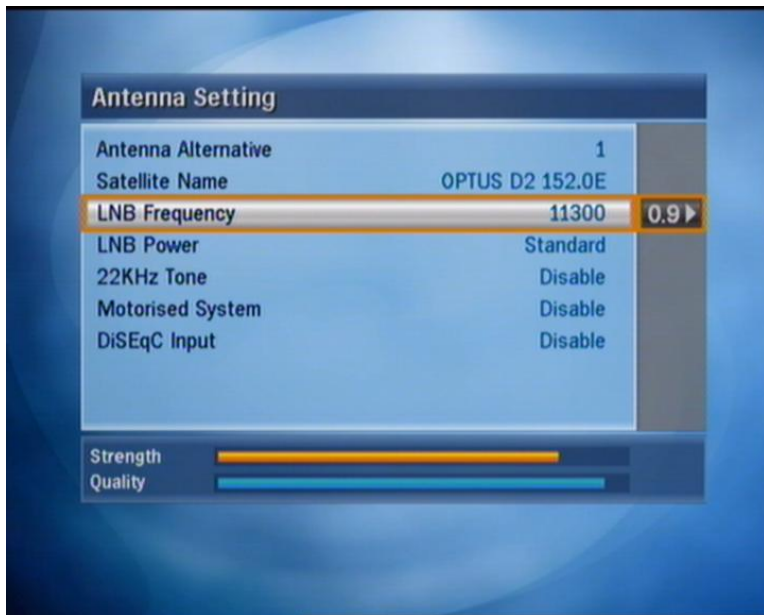
STEP 6

SCROLL DOWN TO **LNB FREQUENCY**

PRESS **THE LEFT ARROW** UNTIL **0.9** IS SELECTED

TYPE IN **1 1 3 0 0**

IF YOU'RE USING A NON STANDARD LNB TYPE eg. 10700 OR ANY OTHER, ENTER THE CORRECT FREQUENCY



STEP 7

ENSURE SETTINGS ARE AS SHOWN ON THE PICTURE

CHANGE 22KHz TO ENABLE IF YOU ARE GETTING NO QAULITY ON THE STRENGTH BARS ON THE BOTTOM OF THE SCREEN

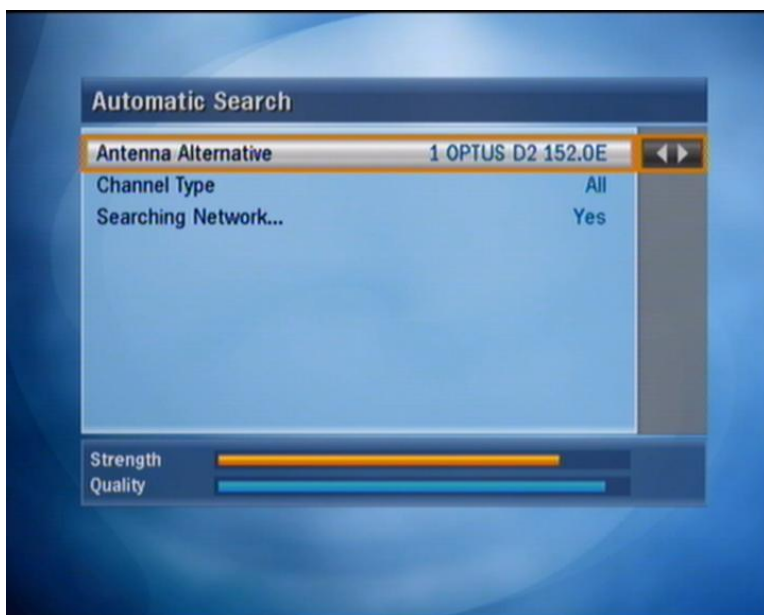
PRESS **EXIT**



STEP 8

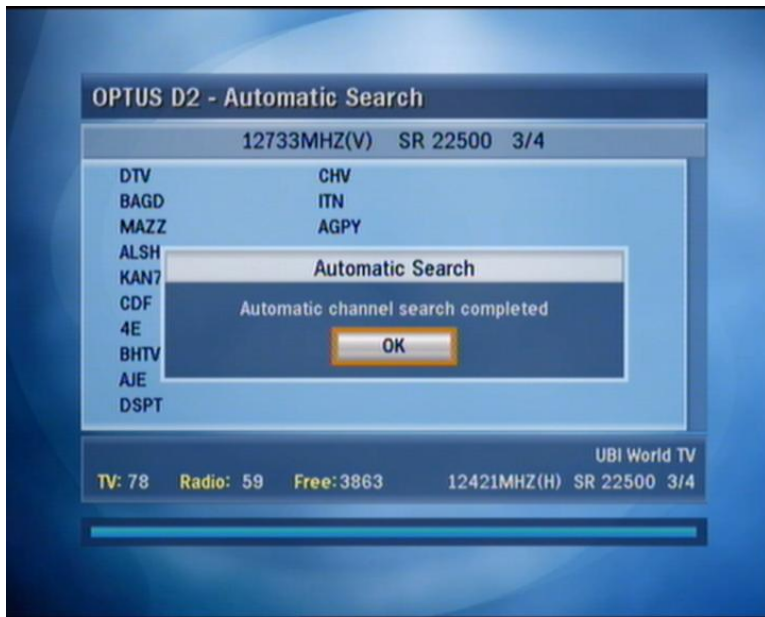
SCROLL DOWN TO **AUTOMATIC SEARCH**

PRESS **OK**



STEP 9

PRESS **OK** AGAIN



STEP 10

PRESS **OK** ONCE THE SEARCH HAS BEEN COMPLETED

PRESS **EXIT** THREE TIMES TO ENJOY YOUR UBI